



2-Circle Segment 5203.20

- multi-axis positioning systems possible by simple combination of stages (e.g. with 5102.20, 5103.20)
- high-precision worm gear drive with smoothed and tempered worm gear (self-locking)
- slideways of the dovetail guides made of low-friction compression-proof plastic sliding surface and hard-coated aluminium
- minimal "Sphere of Confusion" through specially fitted guide tracks optimised to each other
- use of stress-relieved, highly resilient materials guarantees high system stability and long life
- robust surfaces through highly tensile hard-coated aluminium
- two precision configurations

Modularly individually configurable:

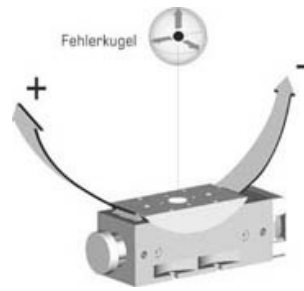
- from basic model to high-end system
- to multi-axis systems
- with customer-specific hole pattern

Specifications:

Travel range [°]:	+/- 18 upper axis (adjust. limit switches) +/- 15 lower axis (adjust. limit switches)
Material (base/slide):	Aluminium coated
Gear ratio:	360:1
Resolution [°]:	0.001* 0,00005 minimum
Sphere of conf. total [µm]:	+/- 5
Max. load [N]:	2000
Min. drive torque [Nm]:	0.45
Weight [kg]:	9.5 (without motor)
Flange size [mm]:	56

* step motor, 1000 steps/revolution

Precision configurations:



Rx-/Ry-Axis	X1	XE
Accuracy ["]:	<= +/- 15	on request
Repeatability (unidir.)["]:	<= +/- 2	on request
Reversal error ["]:	<= 10	on request

Application specific versions:

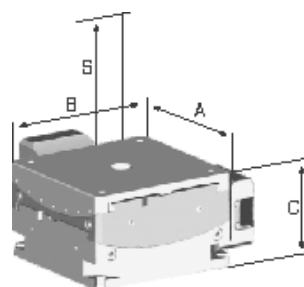
- vacuum suitable
- antimagnetic
- radiation resistant

Maximum load:

A general statement of maximum load and torque capacities is not possible for eccentric forces due to the amount of different configurations.

However, our engineers will gladly calculate the maximum load capacity for your specific application.

Dimensions [mm]:

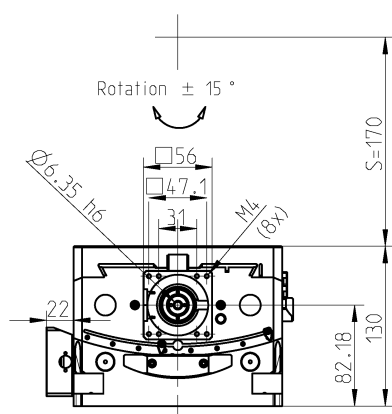
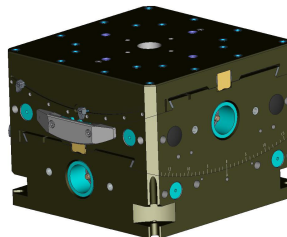
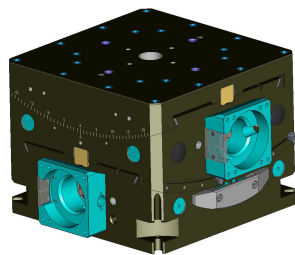


S:	A:	B:	C:
170	170	170	130

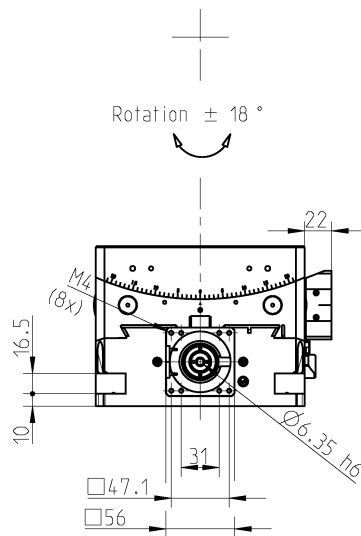
Accessories:

Motors: 2-/3-/5-Ph.

	Servo/DC
Hand wheels:	0056
Gear boxes:	2056.05
	2056.10
	2056.20
Limit switches:	included
Zero-point control:	9100
Encoder XE :	incremental
	absolute
Control system:	9300



top view



bottom view

