



Slit Screen 3001.10

The slit consists of one pair of blades.
Their motion is symmetrical to the centre of the aperture.

Material:

Housing: Aluminium*
Blades: 2mm Tungsten*

* other materials available on request

Specifications:

Aperture [mm]:	0-10
Adjustment:	symmetric
Adjustment precision [mm]:	0.02
Parallelity [mm]:	0.02
Weight [kg]:	0.1

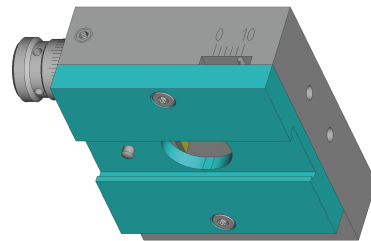
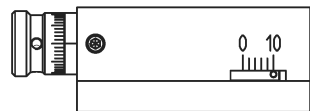
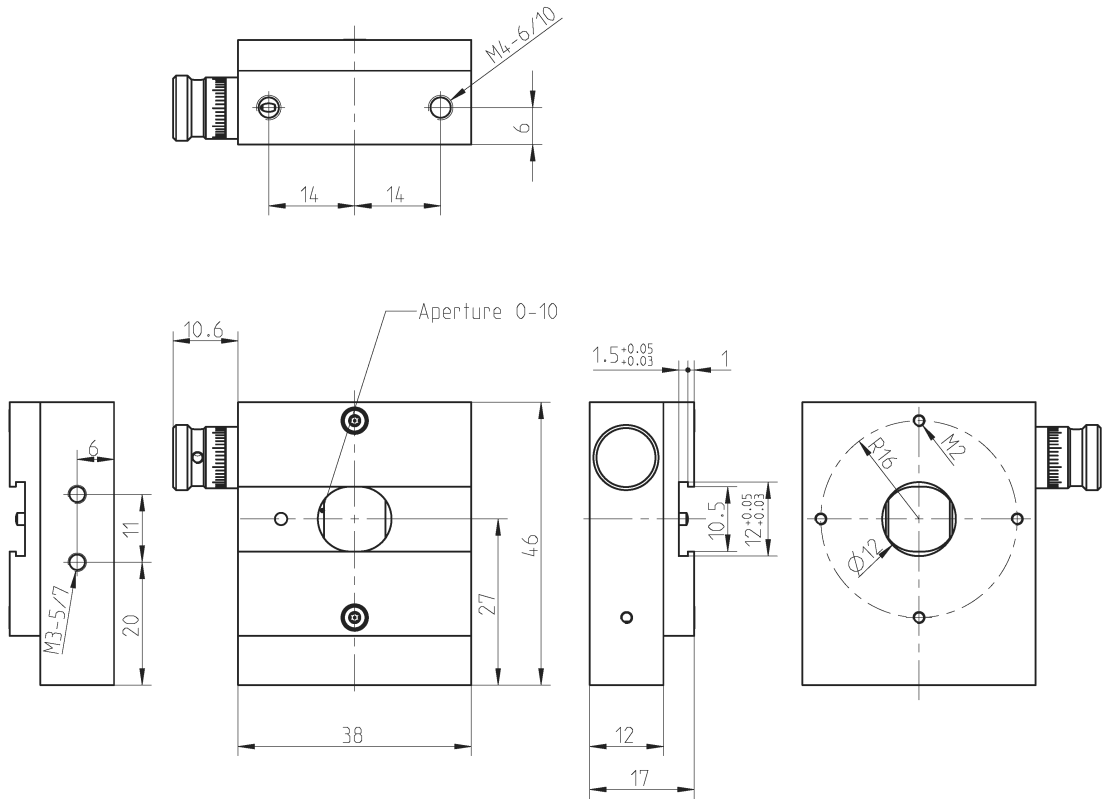
Blade geometries:

The following blade geometries are available:

- A)  (Standard)
- B) 
- C) 

Accessories:

Slit apertures ranging from 0.01 to 8mm in size



Beam Direction