

2-Circle Segment 5203.10-150

- multi-axis positioning systems possible by simple combination of stages (e.g. with 5102.10, 5103.10)
- high-precision worm gear drive with smoothed and tempered worm gear (self-locking)
- dovetail guides with fitted bronze slideways
- use of stress-relieved, highly resilient materials guarantees high system stability and long life
- robust surfaces through nickel-/chrome-treatment
- two precision configurations

Modularly individually configurable:

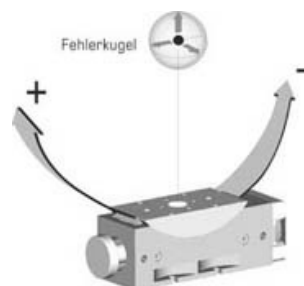
- from basic model to high-end system
- to multi-axis systems
- with customer-specific hole pattern

Specifications:

Travel range [°]:	+/- 11 (adjustable limit switches)
Material (base/slide):	Bronze
Gear ratio:	720:1
Resolution [°]:	0.001*
	0.00005 minimum
Sphere of conf. total [μm]:	+/- 15
Max. load [N]:	500
Min. drive torque [Nm]:	0.50
Weight [kg]:	3.5 (without motor)
Flange size [mm]:	42

* step motor, 1000 steps/revolution

Precision configurations:



Rx-/Ry-Axis

X1

XE

Accuracy ["]:	<= +/- 30	on request
Repeatability (unidir.) ["]:	<= +/- 6	on request
Reversal error ["]:	<= 12	on request

Application specific versions:

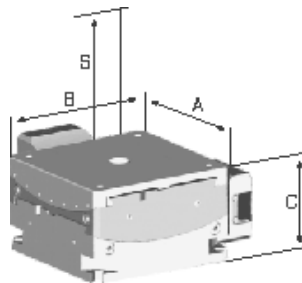
- vacuum suitable
- antimagnetic
- radiation resistant
- in black

Maximum load:

A general statement of maximum load and torque capacities is not possible for eccentric forces due to the amount of different configurations.

However, our engineers will gladly calculate the maximum load capacity for your specific application.

Dimensions [mm]:

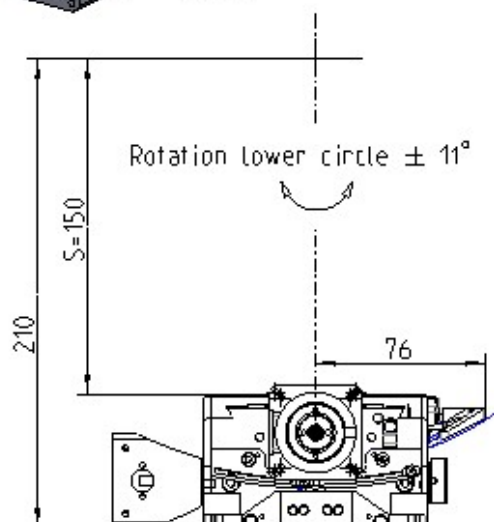
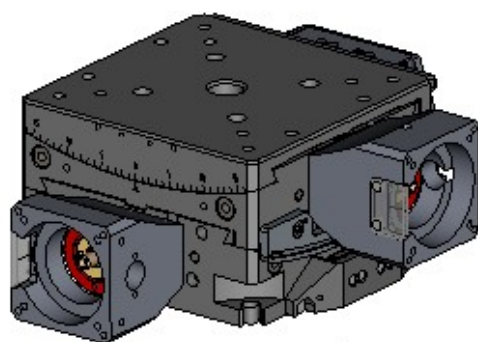


S:	A:	B:	C:
150	100	100	60

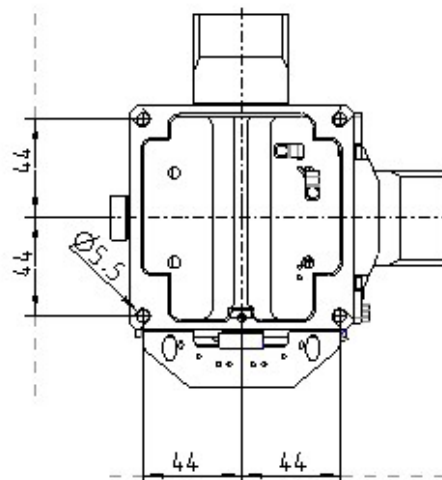
Accessories:

Motors:	2-/5-Ph. Servo/DC
Hand wheels:	0042
Gear boxes:	2042.10 2042.20
Limit switches:	included (optional: internal not adjustable)
Zero-point control:	9100
Encoder	XE : incremental

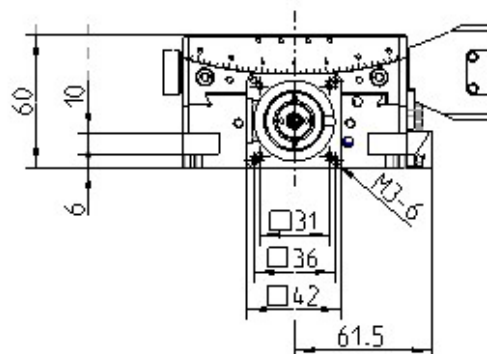
absolute
Control system: 9300



Adjustable Limit switch Rx / Ry



Rotation upper circle $\pm 13^\circ$



top view

