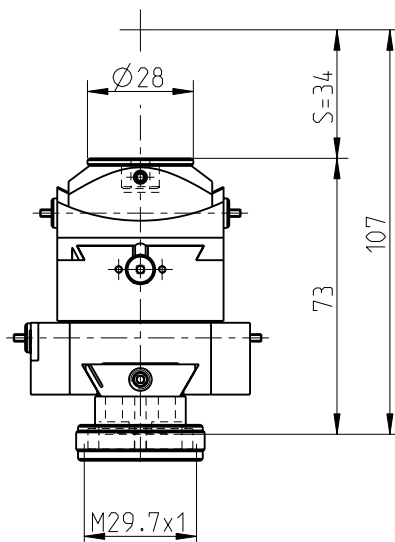


4 3 2 1

Rotation Rx $\pm 22^\circ$



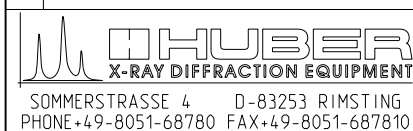
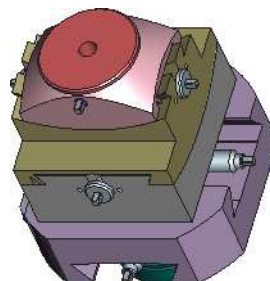
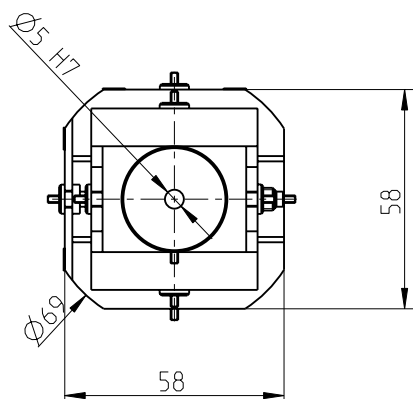
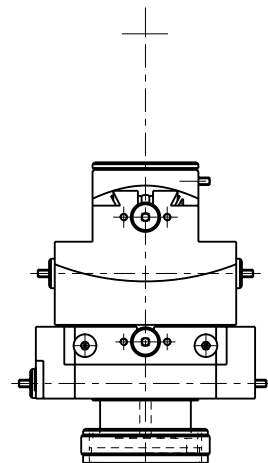
Translation ± 11 mm



Rotation Ry $\pm 21^\circ$



Translation ± 11 mm



Allgemein-
toleranzen
nach
ISO 2768 -fH

Maßstab: 1:2

H_z.-Gew.:

Werkstoff:

F_t.-Gew.: 1.02kg

Variante von TS-ID:

Halbzeug (TS-ID):

				Datum	Name
			Modell	30.03.2009	IMP
			Z-Bear	20.02.2014	hp

Goniometerkopf 1003
 1003 Standard (ohne Spitze)

Oberflaeche:	Modell-Dok.-ID	Klasse	Teilestamm-ID	Revision	Blatt 1
Spez. Umgebung:	29321	BF	22137	-	1 Bl.
Alte Klassifiz: BF-500-011-000-00					A4
Alte ID-#: 104691	Alte Z-#: 1003	Zeichnungs-Dok.-ID: 29323	TS-ID d. Vorlage:		