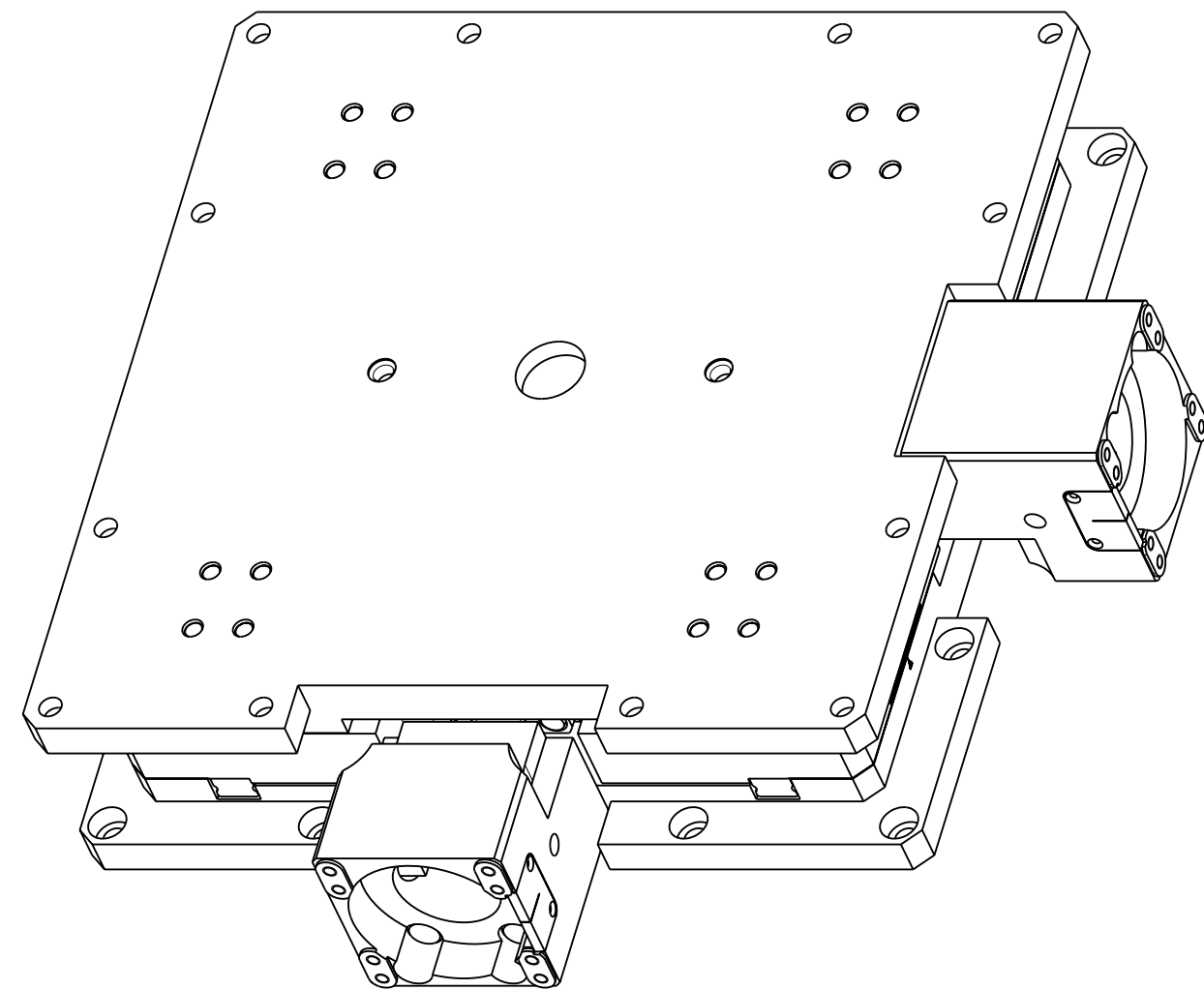
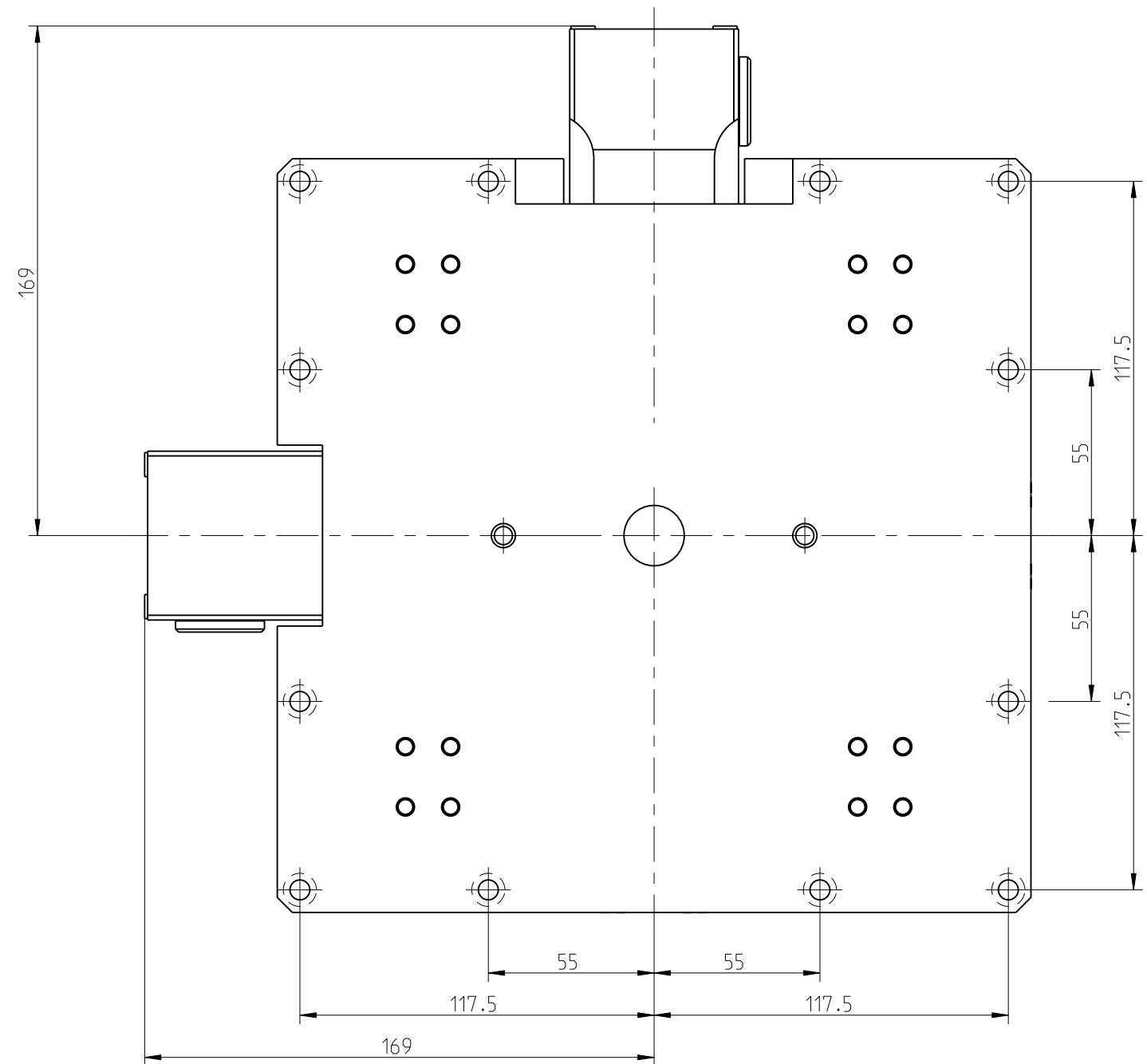
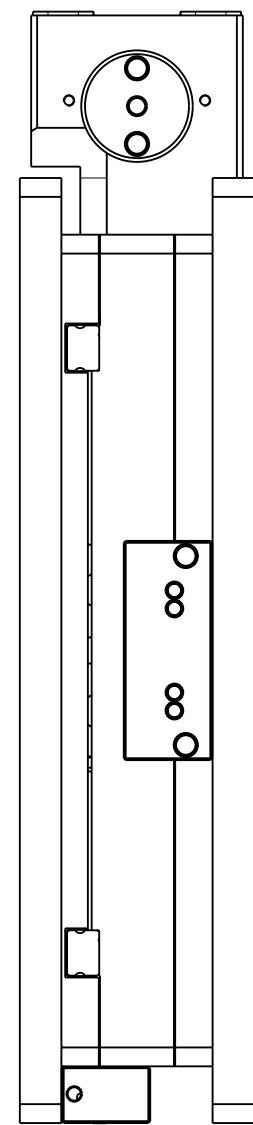
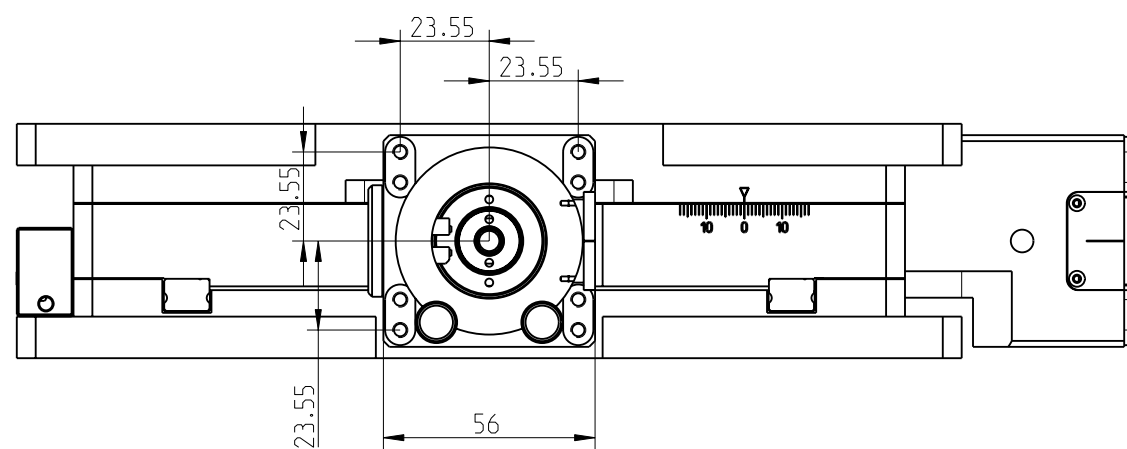
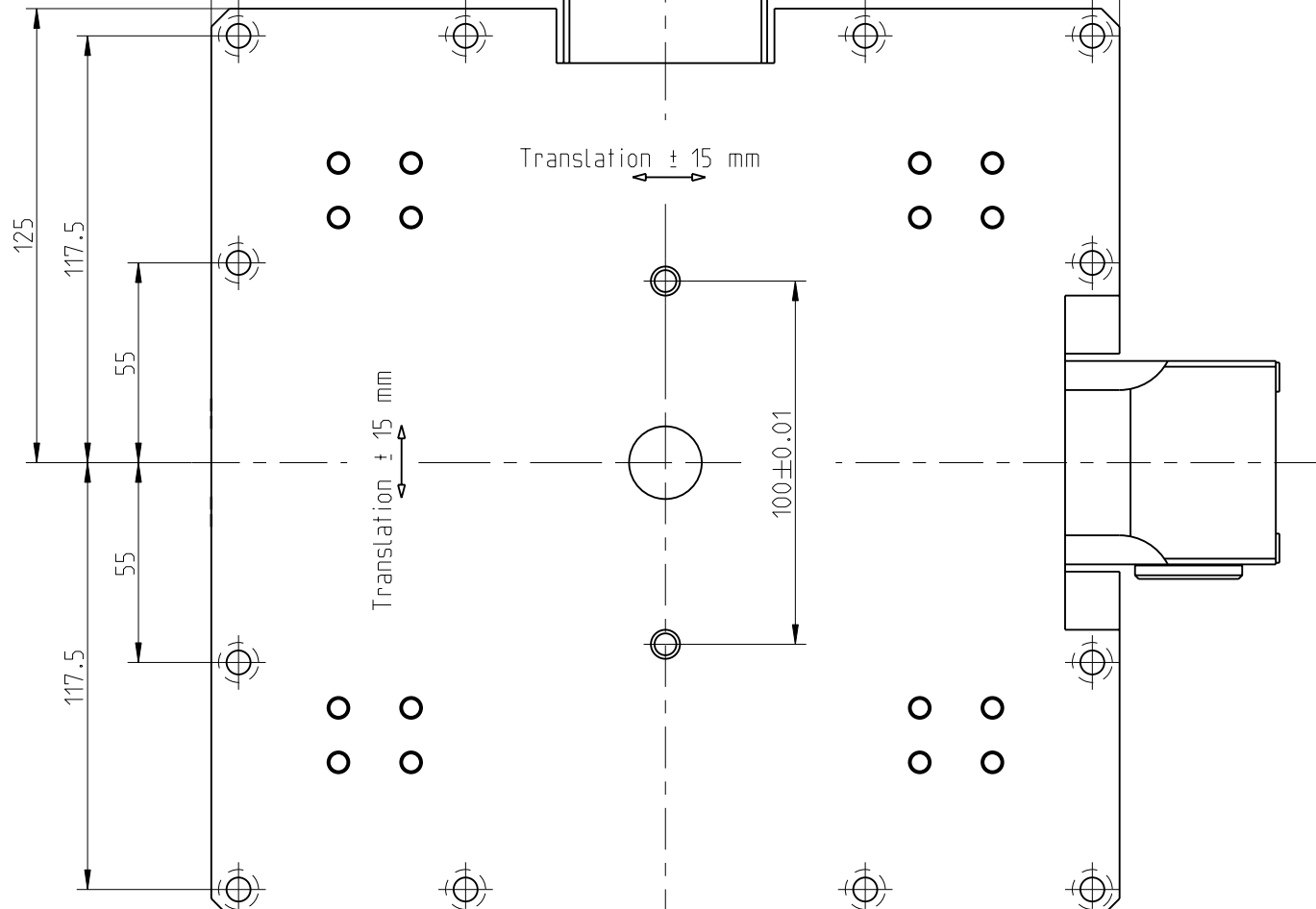
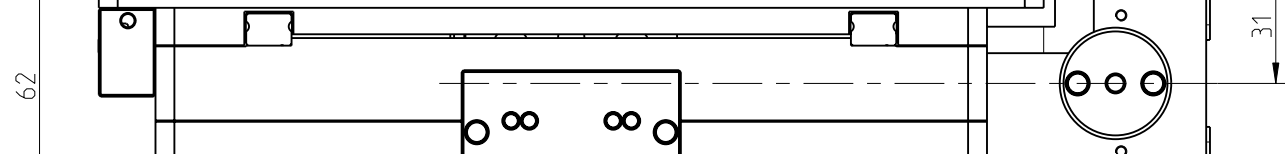
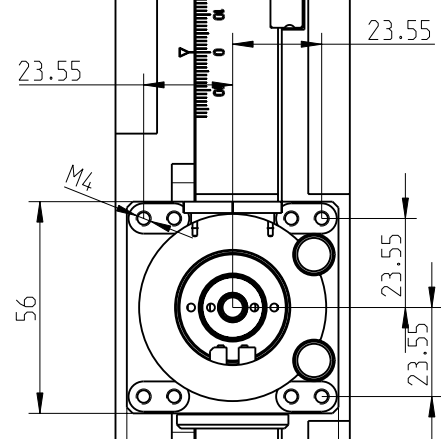



A B C D E F



 SOMMERSTRASSE 4 D-83253 RIMSTING PHONE+49-8051-68780 FAX+49-8051-687810				Allgemein- toleranzen nach ISO 2768 -fH		Maßstab: 1:2			Hz.-Gew.:				
Werkstoff:						Ft.-Gew.:		10kg					
						Variante von TS-ID:							
						Halbzweig (TS-ID):				XY-Tisch 5102.30 250x250x62; ±15 mm Weg			
					Datum	Name							
				Modell	01.12.2014	jd							
A	Änderungsnr.341	01.12.14	jd	Z-Bear	24.07.2019	mn							
-	Änderungsnr.341	01.12.14	jd										
Oberflaeche:				Modell-Dok.-ID 128176		Klasse BF		Teilestamm-ID 29785		Revision A		Blatt 2 2 Bl. A2	
Spez. Umgebung:													
Alle Klassifiz:													
Alte ID -#:				Alte Z-#:		Zeichnungs-Dok.-ID: 128178			TS-ID d. Vorlage:				